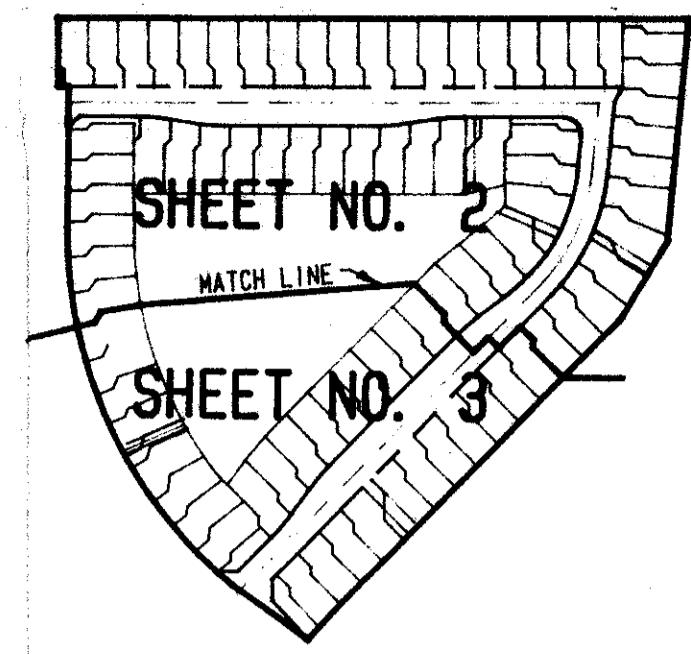


PALOMAR

A REPLAT OF A PORTION OF TRACT *N*, OF BOCA POINTE NO. 1, PART OF A P.U.D., AS RECORDED IN PLAT BOOK 42, PAGES 141, 142 AND 143 OF THE PUBLIC RECORDS OF PALM BEACH COUNTY, FLORIDA

IN PART OF SECTION 28, TOWNSHIP 47 SOUTH, RANGE 42 EAST
PALM BEACH COUNTY, FLORIDA
IN THREE SHEETS SHEET NO. 2

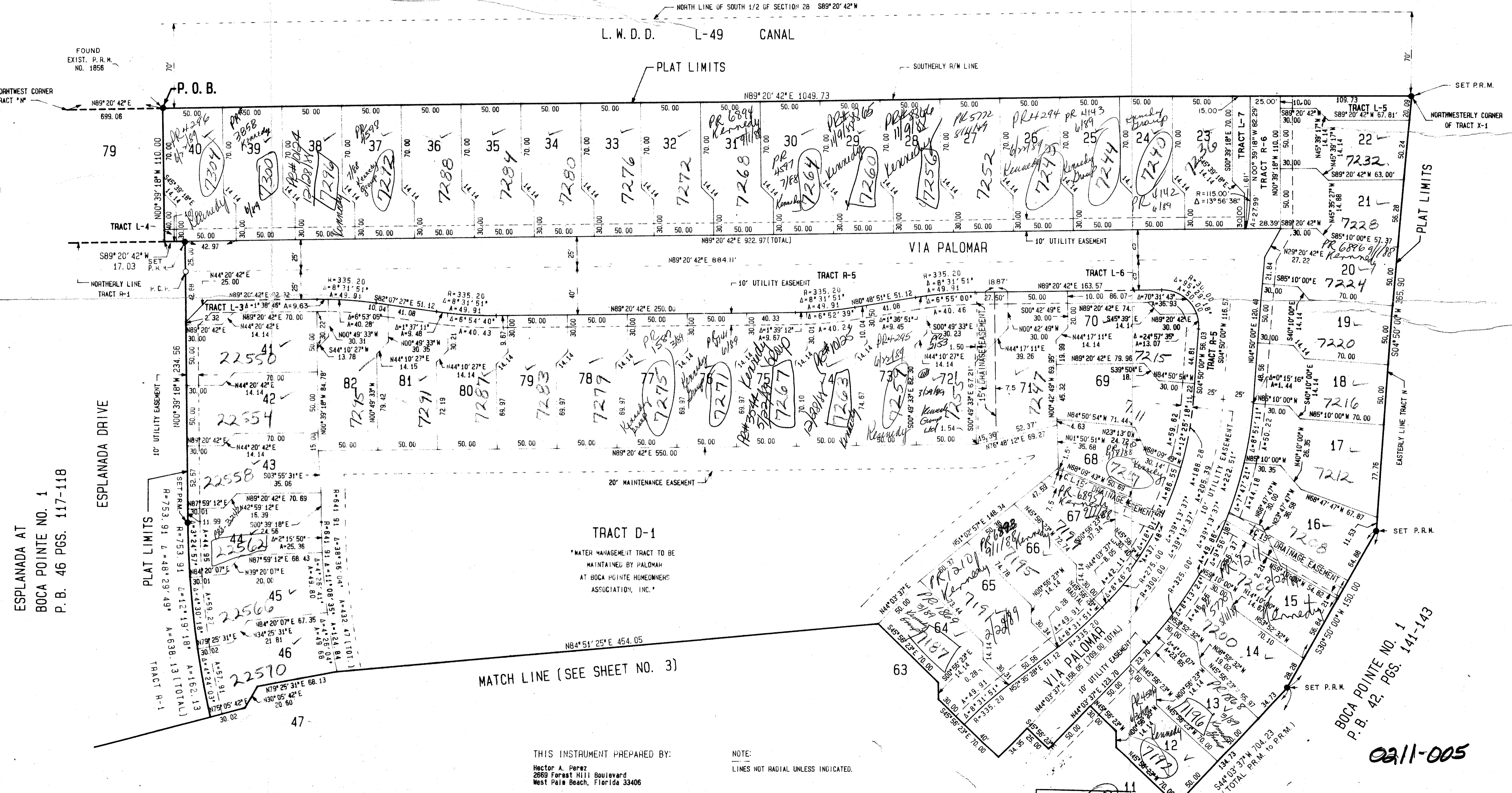
LANGAN ENGINEERING ASSOCIATES, INC.
WEST PALM BEACH, FLORIDA
APRIL, 1988



KEY MAP
SCALE: N.T.S.

STATE OF FLORIDA
COUNTY OF PALM BEACH
This plat was filed for record at _____ M. this _____ day of _____ 1988, and duly recorded in Plat Book No. _____ on Pages _____ thru _____
JOHN B. DUNKLE
Clerk Circuit Court
By: _____ D.C.

SCALE 1" = 40'
SCALE IN FEET



85147142
SUBDIVISION Palomar
BOOK 57 PAGE 108
FLOOD ZONE A-01 FLOOD MAP # 410B
QUAD # 54
SE PUD 73-85 ZIP CODE 33433
PUD NAME Boca Pointe PUD

Computed M.C.M.
Drawn M.C.M.
Checked H.A.P.
Comments
Approved
Revision

THIS INSTRUMENT PREPARED BY:
Hector A. Perez
2659 Forest Hill Boulevard
West Palm Beach, Florida 33406

NOTE:
LINES NOT RADIAL UNLESS INDICATED.

ADD. BY [Signature]
CHECKED BY [Signature]

PALOMAR 59/108

0211-005

ESPLANADA AT
BOCA POINTE NO. 1
P.B. 46 PGS. 117-118

ESPLANADA DRIVE

TAZ 680

MATCH LINE (SEE SHEET NO. 3)

TRACT D-1
WATER MANAGEMENT TRACT TO BE MAINTAINED BY PALOMAR AT BOCA POINTE HOMEOWNERS ASSOCIATION, INC.

BOCA POINTE NO. 1
P.B. 42, PGS. 141-143